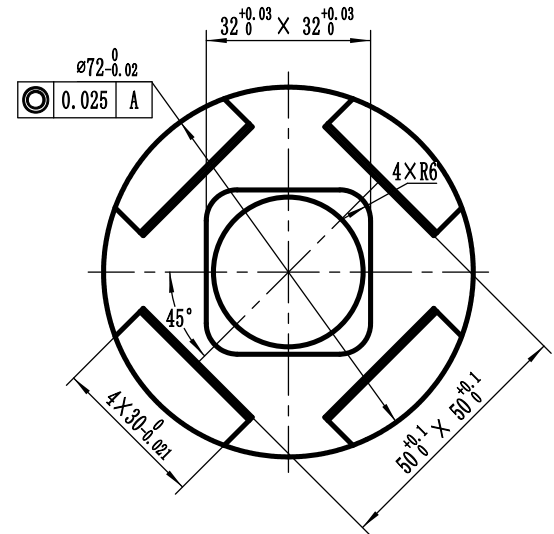
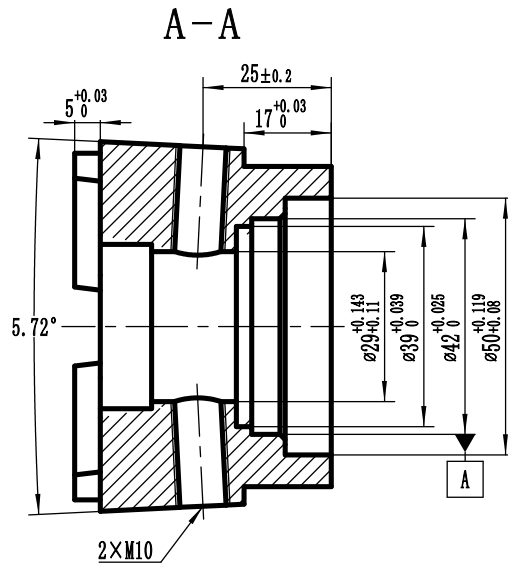
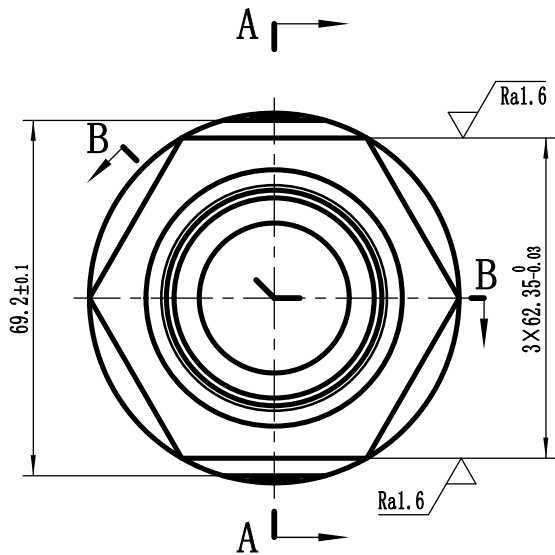
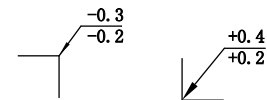
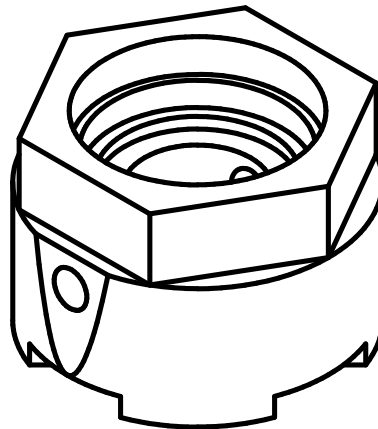
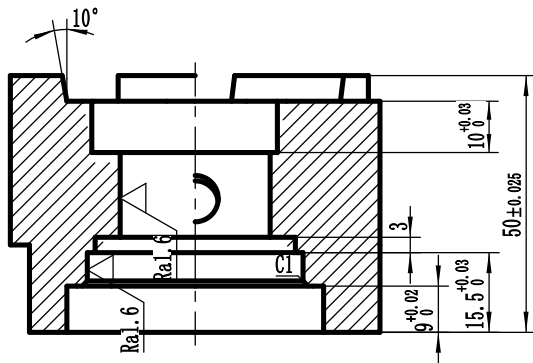


其余 ∇ Ra3.2



B-B



技术要求

1. 未注圆角为R1;
2. 去锐边毛刺, 直角处倒钝;
3. 未注尺寸公差按GB/T 1804-2000 m级;
4. 未注形位公差按GB/T1184-96 H级。

制图		座体	1:1
校核			2A12
图号	XS-001	加工中心操作工 (多轴联动加工技术)	